



敬业集团
JINGYE GROUP



BRITISH
STEEL



钢轨产品手册 Rail Product Range

BUILDING STRONGER FUTURES

2020

李赶坡

敬业集团董事长

第十一届全国人大代表
河北省冶金行业协会副会长
河北省冶金政研会副会长
河北省企业家协会常务理事
清华大学高级工商管理硕士



LI GANPO

Chairman of the Board of Jingye Group

Deputy to the Eleventh National People's Congress
Vice-chairman of Hebei Metallurgy Association
Vice-chairman of Hebei Metallurgy Society of Ideological and Political Work
Standing Director of Hebei Entrepreneur Association
Master of EMBA in Tsinghua University



欢迎来到英国钢铁公司

英国钢铁公司是欧洲领先的钢铁制造商之一，每年生产约450万吨优质钢材。公司提供高品质的钢轨、型钢、异型钢、线材及各种钢材半成品，广泛应用于全球高端工业领域。

2020年3月，英国钢铁公司被中国知名跨行业集团公司 - 敬业集团收购，从此开启了公司的新篇章。

英国钢铁已经有150多年的光荣历史，我们坚信在接下来的岁月里能够继续创造辉煌。

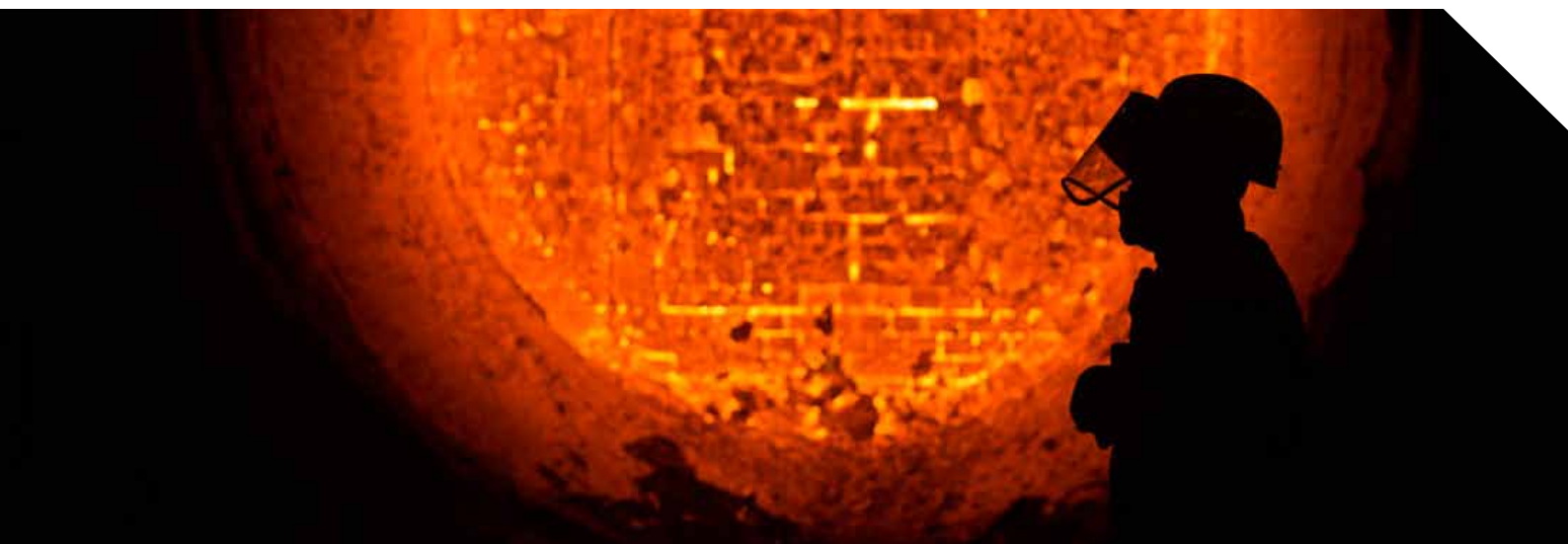


WELCOME TO BRITISH STEEL

British Steel is one of Europe's leading steel manufacturers, producing around 4.5 million tonnes of quality steel products every year. We supply high-quality rail, sections, special profiles, wire rod and a variety of semi-finished products for some of the most demanding applications around the world.

In March 2020, we were bought by distinguished Chinese multi-industrial company Jingye Group, beginning a new chapter in British steelmaking.

Our steelworks have existed for around 150 years and we're excited about what we can collectively achieve to build a successful future for many years to come.



敬业集团简介

敬业集团是以钢铁为主业，兼营钢材深加工、国际贸易、粉末冶金3D打印、旅游、酒店的跨行业集团公司，现有员工27000名。

2019年集团销售收入1274亿元，上缴税金45.3亿元，在全国500强企业名列217位，中国制造业排名95位。2014年9月28日，重组内蒙古乌兰浩特钢铁有限责任公司；2020年3月9日正式收购英国钢铁公司，成为跨国企业集团。“敬业”商标是中国驰名商标，敬业品牌价值312.95亿元。

敬业集团是全球大型螺纹钢生产基地、国家高强钢筋生产示范企业、国家高新技术企业。成功开发了船板、桥梁板、高层建筑用钢、高强抗震螺纹钢、圆钢等系列高附加值品种钢，产品畅销国内，并出口到80多个国家和地区，应用于北京大兴国际机场、南水北调、石家庄地铁系统、雄安市民服务中心、文莱跨海大桥、巴基斯坦核电站等国内外重点工程建设中。被中国中铁、中国电建、中国路桥、中国建筑等多家央企列为优秀供应商。

敬业集团将认真贯彻党的十九大精神及习近平新时代中国特色社会主义思想，在各级党委、政府指引下，持续推进转型升级，坚持绿色发展高质量发展，按企业“四化”部署，打造中国建筑精品钢铁基地、循环经济示范园、钢材深加工基地与高新技术产业基地，做大钢材深加工、国际贸易、高科技、康养旅游四大板块，利用收购英钢契机，统筹国内外资源做全球钢材和金属制品供应服务商、全球小矿种及各种能源贸易商，朝着国内效益最好、国际一流的企业集团目标大步迈进！

Jingye Group profile

Jingye Group is a multi-industry group mainly engaged in steel business, complemented by steel deep processing, international trade, powder metallurgy and 3D printing, tourism and hospitality businesses. It's currently staffed with 27,000 employees.

In 2019, the Group's sales revenue reached 127.4 billion yuan, and taxes paid amounted to 4.53 billion yuan. It ranks 217th among the top 500 companies in China and 95th in the manufacturing industry in China. On September 28, 2014, the Group reorganized Inner Mongolia Ulanhot Steel Co., Ltd.; On March 9, 2020, the Group became a multinational enterprise group with the acquisition of British Steel Limited. The "Jingye" trademark is a well known trademark in China, JINGYE brand value 31.295 billion yuan.

Jingye Group is a large global steel rebar production base, a national high-strength steel bar production demonstration enterprise, and a national high-tech enterprise. The Group has successfully developed a series of high value-added steels such as ship plates, bridge plates, high-rise building steels, high-strength seismic rebars and round steels. The products are sold well in China and exported to more than 80 countries and regions. They are applied to the construction of Beijing Daxing International Airport, South-to-North Water Diversion Project, Shijiazhuang Subway System, Xiong'an Citizen Service Center, Brunei Cross-sea Bridge, Pakistan Nuclear Power Plant and other key projects at home and abroad. The Group has been listed as an excellent supplier by many central enterprises, including China Railway, China Power Construction, China Road and Bridge and China Construction.

To conscientiously implement the spirit of the 19th National Congress of the Communist Party of China and Xi Jinping's thought of socialism with Chinese characteristics in the new era, the Group will continuously advance transformation and upgrading as guided by the Party committees and governments at all levels, and insist on green development and high-quality development. According to the corporate strategy of Intelligence, Customer Centralization Internationalization, and Asset Light Model, the Group will build a high-quality steel base in China, a demonstration park of circular economy, a steel deep processing base and a high-tech industry base. The Group will continually expand the four sectors of steel deep processing, international trade, high technology and recreational tourism, and integrate domestic and international resources via the acquisition of British Steel Limited. Giving full play to its role as a global supplier of steel and metal products, a global trader of small minerals and various energy sources, the Group will march toward the goal of the most economically-efficient enterprise in China and an international first-class enterprise!

市场应用

公司按照国际标准制造各种产品，广泛应用于各种行业和领域，为日新月异的世界作出了巨大贡献。

公司生产的钢材帮助建造了一些世界上最具标志性，且举世瞩目的项目，包括：

- 伦敦碎片大厦
- 伦敦横贯铁路
- 吉隆坡双子塔
- 伊斯坦布尔卡米利卡塔
- 纽约洋基体育场
- 海洋和谐号游轮

THE MARKETS WE SERVE

Our wide range of products, manufactured to internationally recognised standards, are used in many markets and demanding applications, helping share the modern world we see around us every day.

Our steel has helped build some of the world's most iconic and awe-inspiring projects, including:

- The Shard, London
- Crossrail, London
- Petronas Towers, Kuala Lumpur
- Camlica Tower, Istanbul
- Yankees Stadium, New York
- Harmony of the Seas cruise ship

汽车领域
Automotive



建筑行业
Construction



能源和电力
Energy & Power



施工与土方工程设备
Construction & Earthmoving Equipment



国防与安全
Defence & Security



Photo courtesy of Andrew Linnett/MOD

铁路
Rail Infrastructure



消费品
Consumer Goods



目录

有关钢轨

- 1 钢轨和牌号
- 2 HP 系列
- 3 Zinoco® 涂镀轨
- 4 钢轨枕木
- 5 联系方式

7

8

11

13

15

17

ABOUT RAIL

- 1 Rail profiles and grades
- 2 HP range
- 3 Zinoco® coated rail
- 4 Steel sleepers
- 5 Contacts

7

8

11

13

15

17



有关钢轨

英钢始于2006年生产钢轨，工厂在斯肯索普，英钢生产钢轨的历史可追溯至19世纪中叶，当时生产的第一条公共铁路对全世界的运输行业产生了重大影响。

英钢的一些创新技术是世界一流的，包括钢铁生产的Bessemer转换方法，钢轨的连续铸造以及无损检测技术。

我们以合作伙伴形式与钢轨客户合作，了解并研发满足他们对更长寿命和更少维护需求的钢轨产品。

这意味着我们在助力轨道交通行业应对更高的交通量、更大的承载能力和更快的列车速度的挑战中扮演着核心角色。

提供各种长度最长为120米（或焊接长度为216米）的高性钢轨产品，以满足国际高速、重型运输、混合交通、地铁和有轨电车铁路网的需求。这些产品符合有关导轨互用性的指令2008/57/EC法规要求。

公司的技术咨询团队可以提供建议和支持，帮助客户优化铁轨选择。铁轨产品和等级可以与铁轨条件、铁轨类型、环境条件和许多其他变量完美匹配，以确保交付的每条铁轨在其使用寿命内都能提供最佳性能。

ABOUT RAIL

Based in Scunthorpe since 2006, our rail manufacturing dates back to the mid-nineteenth century, when the first public railways were making a major impact on transport throughout the world.

Our innovations have included several world firsts including the Bessemer conversion method of steel production, continuous casting of rail steel and non-destructive testing technologies.

We work in partnership with rail customers to understand their demands and develop products that directly address their needs for more rail life with fewer maintenance requirements.

That means we play a central role in helping the rail industry rise to the challenges of higher traffic volumes, heavier axle loads and faster train speeds.

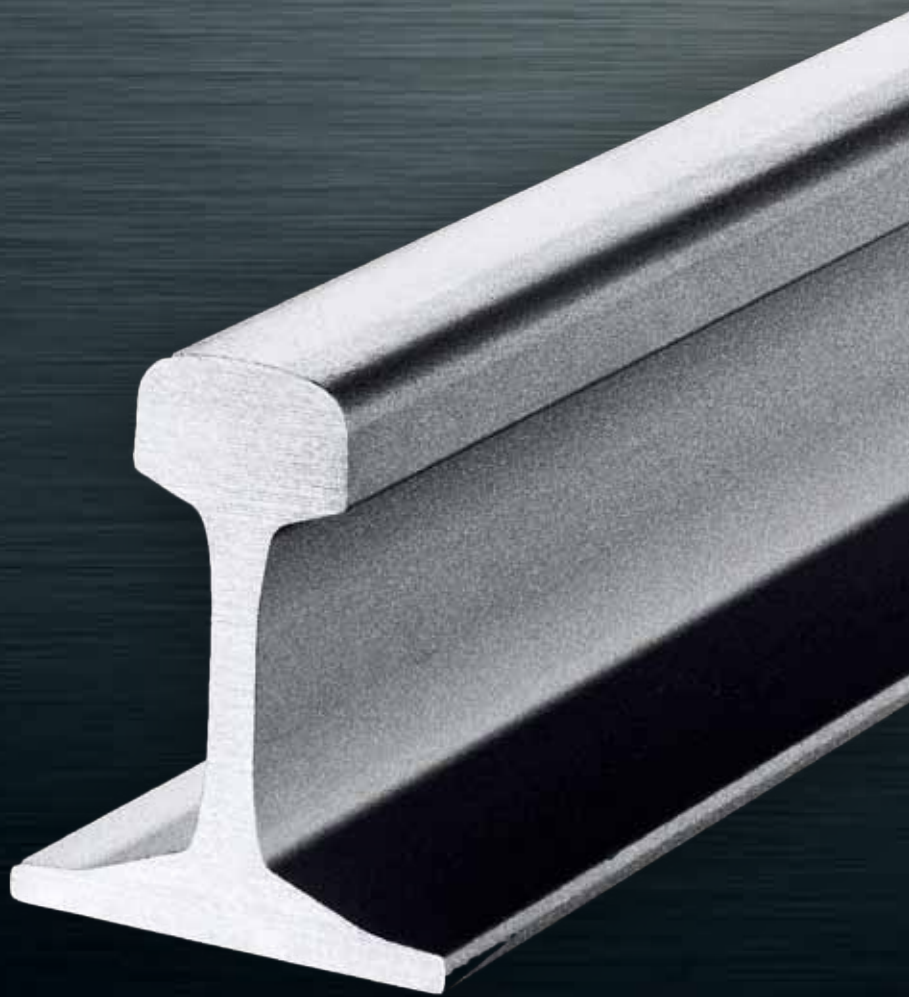
We provide a wide range of high performance rail products of up to 120m in length (or 216m in welded strings) to meet the needs of international high speed, heavy duty, mixed traffic, metro and tramway networks. These are supplied in accordance with directive 2008/57/EC for rail interoperability.

Our technical consultancy team is available to provide advice and support, helping customers to optimise their rail selections. Rail products and grades can be matched precisely to track conditions, track types, environmental conditions and a host of other variables to ensure that every rail we deliver provides optimum performance throughout its service life.



1 钢轨断面和等级

RAIL PROFILES AND GRADES



1 钢轨断面和等级 RAIL PROFILES AND GRADES

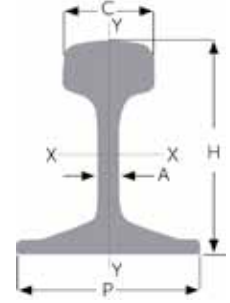
尺寸、性能和成分 Dimensions, properties and compositions

下表中的技术表格列出了在英国制造的各种轨道产品。

The technical tables below show the range of rail profiles we manufacture in the UK.

这些轨道最长可达120m或焊接为216m。

These are available up to 120m long or 216m welded.



EN 13674-1 平底轨 Flat bottom rail >46kg/m

轨道断面 Rail profile	等效断面名称 Equivalent profile name	断面米重 Section weight kg/m	轨道高度 Rail height mm (H)	轨头宽度 Head width mm (C)	腹板厚度 Web thickness mm (A)	轨底宽度 Foot width mm (P)	转动惯量 Moment of inertia I _{xx} cm ⁴	转动惯量 Moment of inertia I _{yy} cm ⁴
54E1	UIC 54	54.77	159.00	70.00	16.00	140.00	2337.9	419.2
54E4	–	54.31	154.00	67.00	16.00	125.00	2056.2	352.7
56E1	BS 113b	56.3	158.75	69.85	20.00	140.00	2321.0	421.6
60E1	UIC 60	60.21	172.00	72.00	16.50	150.00	3038.3	512.3
60E2	–	60.03	172.00	72.00	16.50	150.00	3021.5	510.5

EN 13674-4 平底轨 Flat bottom rail 27kg/m to 46kg/m

轨道断面 Rail profile	等效断面名称 Equivalent profile name	断面米重 Section weight kg/m	轨道高度 Rail height mm (H)	轨头宽度 Head width mm (C)	腹板厚度 Web thickness mm (A)	轨底宽度 Foot width mm (P)	转动惯量 Moment of inertia I _{xx} cm ⁴	转动惯量 Moment of inertia I _{yy} cm ⁴
39E1	BS 80A	39.77	133.35	63.50	13.10	117.47	1204.9	219.6

专用轨道断面 Special rail sections

轨道断面 Rail profile	等效断面名称 Equivalent profile name	断面米重 Section weight kg/m	轨道高度 Rail height mm (H)	轨头宽度 Head width mm (C)	腹板厚度 Web thickness mm (A)	轨底宽度 Foot width mm (P)	转动惯量 Moment of inertia I _{xx} cm ⁴	转动惯量 Moment of inertia I _{yy} cm ⁴
BS 95RBH	大头轨道 Bullhead	47.07	145.26	69.85	19.05	69.85	1458.00	171.00
断面65* Section 65*	导电轨 Conductor	65.41	102.00	89.00	70.00	70.00	677.04	483.57
断面75 Section 75	导电轨 Conductor	75.17	138.00	89.00	22.50	140.00	2163.93	891.66

*可以按照协议制定技术指标 – 如有需求，请联系我们。

*Available by agreement – please contact us to discuss your requirements.

可以提供其他等级铁轨 – 如有需求，请联系我们。

Other rail profiles may be available – please contact us to discuss your requirements.

1 轨道断面和等级 RAIL PROFILES AND GRADES

铁路应用钢种 Rail application steel grades

下表列出了英国钢铁公司的轨道应用等级的标准成分和机械性能。

The tables below indicate the typical steel compositions and mechanical properties for British Steel's rail application grades.

平底轨等级 Flat bottom rail grades

规格 Specification	等级 Grade	化学成分质量% Chemical composition % by mass									机械性能 Mechanical properties		
		C	Si	Mn	P	S	Cr	Al	V	H2 (ppm)	Rm (MPa)	延伸率 Elongation (%)	HBW 运行表面 running surface
UIC 860-R	700	0.40-0.60	0.05-0.35	0.80-1.25	≤ 0.050	≤ 0.050	–	–	–	–	680-830	≥ 14	–
	900A	0.60-0.80	0.10-0.50	0.80-1.30	≤ 0.040	≤ 0.040	–	–	–	–	880-1030	≥ 10	–
	900B	0.55-0.75	0.10-0.50	1.30-1.70	≤ 0.040	≤ 0.040	–	–	–	–	880-1030	≥ 10	–
EN 13674-1	R200	0.40-0.60	0.15-0.58	0.70-1.20	≤ 0.035	0.008-0.035	≤ 0.15	≤ 0.004	≤ 0.03	≤ 3.0	≥ 680	≥ 14	200-240
	R220	0.50-0.60	0.20-0.60	1.00-1.25	≤ 0.025	0.008-0.025	≤ 0.15	≤ 0.004	≤ 0.03	≤ 3.0	≥ 770	≥ 12	220-260
	R260	0.62-0.80	0.15-0.58	0.70-1.20	≤ 0.025	0.008-0.025	≤ 0.15	≤ 0.004	≤ 0.03	≤ 2.5	≥ 880	≥ 10	260-300
	R260Mn	0.55-0.75	0.15-0.60	1.30-1.70	≤ 0.025	0.008-0.025	≤ 0.15	≤ 0.004	≤ 0.03	≤ 2.5	≥ 880	≥ 10	260-300
IRS	880	0.60-0.80	0.10-0.50	0.80-1.30	≤ 0.030	≤ 0.030	–	≤ 0.015	–	≤ 1.6	≥ 880	≥ 10	≥ 260
British Steel	优质* Premium: BLF320*	0.10-0.30	0.80-1.80	1.20-1.80	≤ 0.025	≤ 0.025	0.30-0.80	≤ 0.004	–	≤ 2.0	≥ 950	≥ 12	340-380
	优质 Premium: HP335	0.87-0.97	0.75-1.00	0.75-1.00	≤ 0.020	0.008-0.020	≤ 0.10	≤ 0.004	0.09-0.13	≤ 2.5	≥ 1175	≥ 8	335-375

*可以按照协议制定技术指标 – 如有需求，请联系我们。

*Available by agreement – please contact us to discuss your requirements.

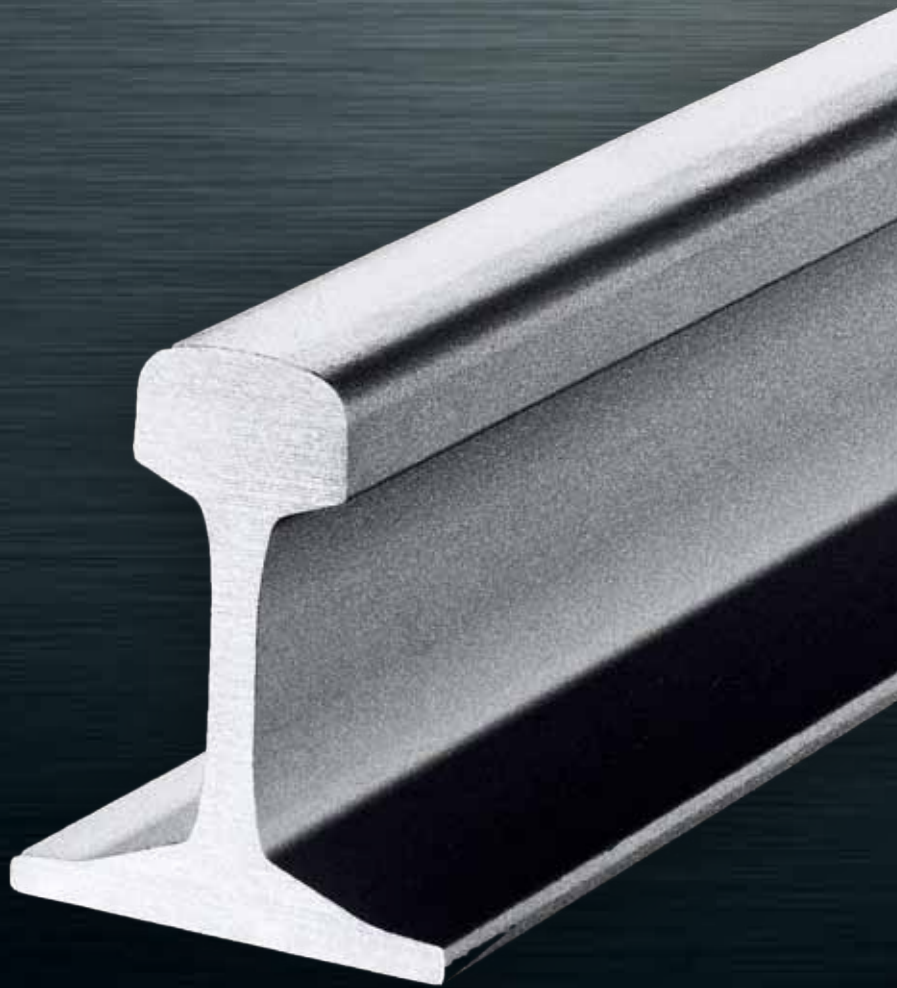
导电轨等级 Conductor rail grade

规格 Specification	等级 Grade	化学成分质量% Chemical composition % by mass									电气性能 Electrical properties	
		C	Si	Mn	P	S	Cr	Al	V	H2 (ppm)	电阻 Resistance (μΩ.cm)	
BS 7865	导电轨 Conductor rail	≤ 0.08	≤ 0.05	≤ 0.30	≤ 0.05	≤ 0.05	–	–	–	–	<11.04	

可以提供其他等级的钢轨 – 如有需求，请联系我们。

Other rail grades may be available – please contact us to discuss your requirements.

2 HP系列 HP RANGE



2 HP系列 HP RANGE

卓越的耐磨性和耐滚动解除疲劳性 Excellent wear and RCF resistance

高性能非热处理导轨是我们最耐磨的产品：

- 专为弯轨和其他高负载区域设计
- 与标准等级的钢轨相比，该产品采用了冶金学设计，可以提高耐磨性和耐滚动接触疲劳性（RCF），从而大大减少了钢轨打磨和轨道维护的需要
- 整个材料都具有均匀的一致硬度，可在整个轨道寿命中保持一致的性能
- 延长钢轨寿命并降低钢轨寿命周期的维护成本
- HP系列产品符合EN 13674-1标准中对钢轨规定的所有质量、生产和尺寸要求。EN13674-1的下一个修订版将包含新材质HP335，CEN欧盟技术标准委员会也在设计技术草图，并将牌号将HP335命名为R335V
- 通过签技术协议可提供HP350替代HP335，其硬度增强到通常只有经过热处理的钢轨中才能达到的硬度 – 适用于重型货运线路

Our High Performance non heat-treated rails are our most wear-resistant grades:

- Designed for curved track and other high duty areas
- Metallurgically engineered to offer improved resistance to wear and rolling contact fatigue (RCF) compared to standard grade rail, greatly reducing the need for rail grinding and track maintenance
- Uniform through-hardness for consistent performance throughout the life of the rail
- Delivering extended rail life and reduced rail life cycle costs
- Our HP range meets all the quality, production and dimensional requirements set out in the EN 13674-1 standard for rails – the next revision of EN 13674-1 is due to include HP335 as a new grade, with the CEN technical committee working draft including HP335 under the name R335V
- HP335 can be supplied, by agreement, as HP350 with an enhanced hardness equivalent to that usually only found in heat treated rails – suitable for heavy duty freight lines

机械性能 Mechanical properties

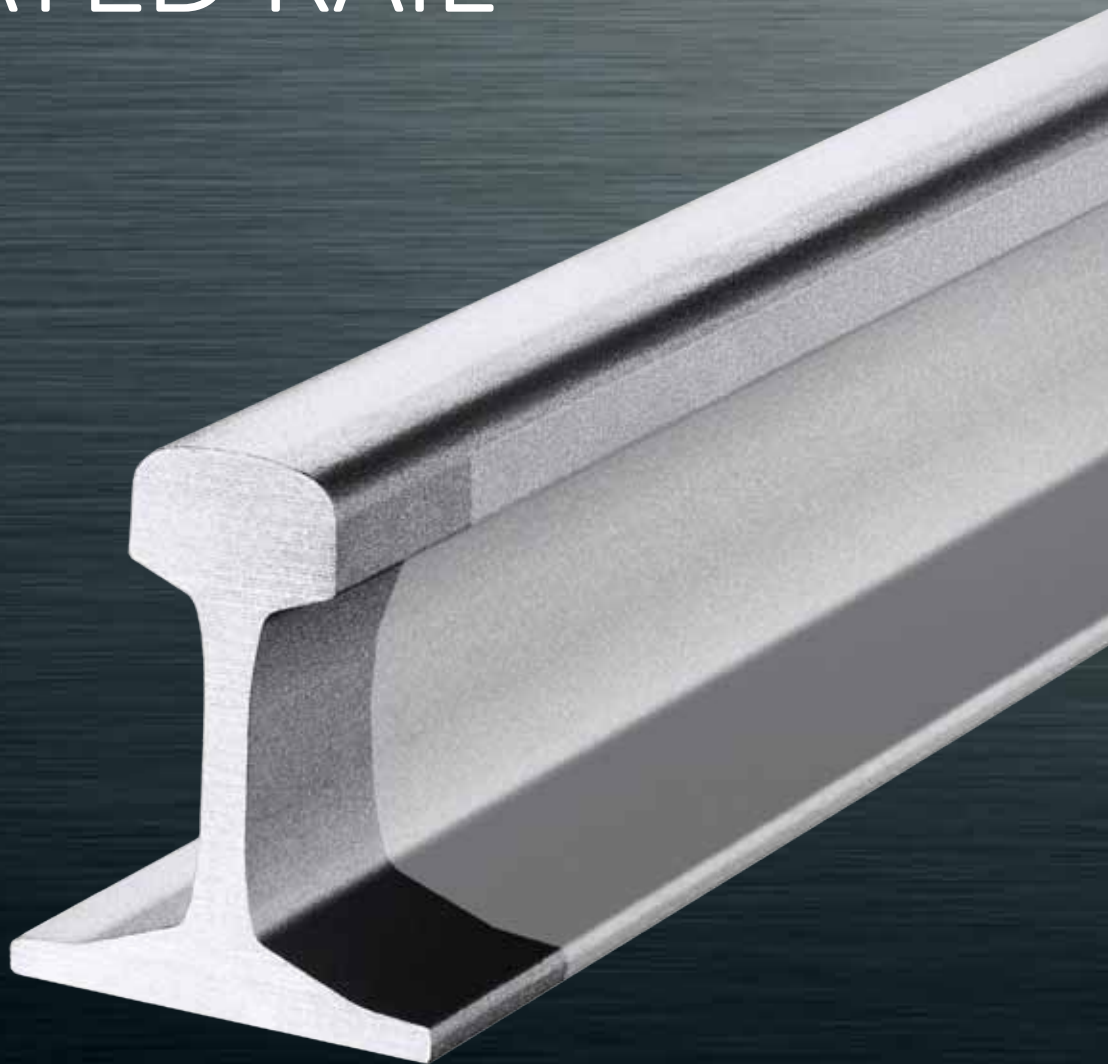
规范 Specification	等级 Grade	Rm (MPa)	延伸率 Elongation (%)	HBW 运行表面 running surface
British Steel	HP335	≥ 1,150	≥ 8	335-375
British Steel	HP350	≥ 1,175	≥ 8	350-390

化学成分 Chemical composition

规范 Specification	等级 Grade	C	Si	Mn	P	S	Cr	Al	V	H2 (ppm)
British Steel	HP335/ HP350	0.87- 0.97	0.75- 1.00	0.75- 1.00	≤ 0.020	0.008- 0.020	≤ 0.10	≤ 0.004	0.09- 0.13	≤ 2.5



3 ZINOCO® 涂镀轨
— ZINOCO®
COATED RAIL



3 ZINOCO® 涂镀轨 ZINOCO® COATED RAIL

超强的抗腐蚀能力 Unbeatable corrosion protection

Zinoco涂层使钢轨具有出色的抗腐蚀性能，延长钢轨使用寿命。

应用于腐蚀环境的理想选择，例如隧道、平交路口、盐场和杂散电流区域。

与英国客户英国国家铁路公司 (Network Rail) 建立合作伙伴关系，后者需要持久涂层以抗腐蚀。

Zinoco涂层提供了2条防护线：

- 坚固的防腐蚀屏障
- 提供自损保护层，因此即使涂层损坏了抗腐蚀保护作用仍会起作用

钢轨Zinoco涂层可防护下图中橙色标注区域的腐蚀，使钢轨能够抵抗因腐蚀而引起的点蚀、磨损和断面损坏。

目前已被英国国家铁路公司（Network Rail）和法国皇家铁路（RATP）使用，爱尔兰铁路（爱尔兰）和伦敦地铁（英国）已批准使用。

Our Zinoco® coated rail offers superior protection against corrosion for longer rail life.

Ideal for corrosive conditions e.g. tunnels, level crossings, salt pans and areas of stray current.

Developed in partnership with UK customer Network Rail who required a durable coating to withstand corrosion.

Zinoco offers 2 lines of defence:

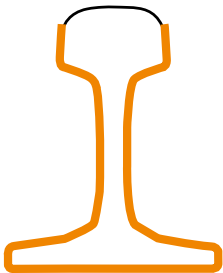
- Durable barrier to combat corrosion
- Provides sacrificial protection, so still works if the coating is damaged

Zinoco coated rail protects against corrosion in the orange areas highlighted in the diagram below, enabling the rail to resist pitting, gall and general loss of section due to corrosion.

Currently being used by Network Rail (UK) and RATP (France), and approved for use by Irish Rail (Ireland) and London Underground (UK).

对比其他竞争产品的表现 Performance against current competition

涂层 Coating	牺牲性保护层 Sacrificial protection	杂散电流防护 Stray current protection	耐磨性 Abrasion resistance	耐冲击性 Impact resistance	去除涂层 Coating removal (for welding)
Zinoco®	有 Yes	极好 Excellent	极好 Excellent	好 Good	中等 Moderate
Railcote®	有 Yes	极好 Excellent	中等 Moderate	中等 Moderate	容易 Easy
铝金属喷漆 Aluminium metal spray	无 No	不好 Poor	非常好 Very good	好 Good	困难/危险 Difficult/hazardous
玻璃鳞片环氧树脂 Glass flake epoxy	无 No	一旦损坏就不好 Poor once damaged	非常不好 Very poor	非常不好 Very poor	困难/危险 Difficult/hazardous
玻璃鳞片聚酯 Glass flake polyester	无 No	一旦损坏就不好 Poor once damaged	不好 Poor	不好 Poor	困难/危险 Difficult/hazardous



4 钢轨枕木 STEEL SLEEPERS



4 钢轨枕木 STEEL SLEEPERS

高效的物流降低了使用周期的成本 Lower lifetime costs with efficient logistics

钢轨枕的设计适用于从米轨到客运干线和重载路线的所有类型的应用。

与传统的混凝土轨枕相比，钢枕需要更少的道渣，从而减少了轨道施工和改造成本。

安装后，钢制轨枕不会腐烂或遭受昆虫的咬蚀。钢枕还可以用在潮湿的热带气候中，在这样的环境中木轨枕将会迅速腐烂。

钢制轨枕可完全回收利用，而且还可以减少碳排放量，从而使您更容易实现可持续发展目标。

由于钢制轨枕比混凝土轨枕轻，因此可堆叠还可以用叉车成捆移动（或如果法规允许也可手动搬运）。

通常，仅需要三分之一的混凝土轨枕所需车辆移动，因此使用钢轨枕有助于将运输成本降至最低。

钢轨枕可在预安装所有紧固系统的情况下交付，从而将您的安装时间降至最短。

Our steel sleepers are designed for use in all types of application, from metre gauge railways to mainline passenger and heavy haul routes.

They require less ballast than traditional concrete sleepers, leading to reduced track construction and renewal costs.

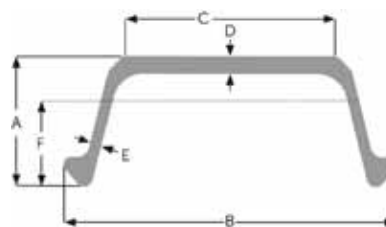
Once installed, steel sleepers don't rot or suffer from insect attacks. They also survive well in wet tropical climates where wood decays rapidly.

Being fully recyclable, our steel sleepers also benefit from a smaller carbon footprint, making it easier to hit your sustainability targets.

Steel sleepers are stackable and because they are lighter than concrete sleepers, can be moved in bundles by a forklift (or manually handled if regulations allow).

Often requiring only a third of the vehicle movements needed by concrete sleepers, using our steel sleepers helps to keep transportation costs to a minimum.

Our steel sleepers can be delivered with all fastening systems pre-installed, helping to keep your installation times to a minimum.



钢轨枕尺寸 Steel sleeper dimensions

轨枕型号 Sleeper profile	板重量 Plate weight kg/m	截面高度 Section height mm (A)	截面宽度 Section width mm (B)	轨座宽度 Rail seat width mm (C)	轨座厚度 Rail seat thickness mm (D)	支腿厚度 Leg thickness mm (E)	转动惯量 Moment of inertia I _{xx} cm ⁴	截面模数 Section modulus cm ³	中性轴距底座的高度 Height of neutral axis from base mm (F)
202	22.10	82	240	160	7.5/12.0	6.75	200.0	34.4	58.1
300	28.36	92	254	160	12.0	7.0	283.3	42.3	67.0
402	28.54	100	260	168	10.0	7.0	426.0	62.8	67.1
436	31.69	100	260	168	12.0	7.0	432.8	65.8	68.4
600	39.53	115	280	168	14.5	7.6	654.7	81.3	80.5

注：
可以提供所有导轨尺寸的轨道枕，并带有轨道倾角。
可为任何轨距尺寸定制轨枕，如 - 1,000mm, 1,067mm (3' 6")，标准尺寸和宽轨距等

Notes:
Can be supplied for all rail sizes and with the inclination required for your network.
Can be tailored to any rail gauge - 1,000mm, 1,067mm (3' 6"), standard and broadgauge.

钢轨枕等级 Steel sleeper grade

规范 Specification	等级 Grade	化学成分质量% Chemical composition % by mass									机械性能 Mechanical properties	
		C	Si	Mn	P	S	Cr	Al	V	H2 (ppm)	Rm (MPa)	延伸率 Elongation (%)
EN 10025	S275	≤ 0.21	0.14-0.25	≤ 1.50	≤ 0.035	≤ 0.035	-	≤ 0.008	-	-	410-560	≥ 23

5 联系方式

CONTACTS

5 联系方式 CONTACTS

如果您想进一步了解产品范围或想得到帮助，请联系。

此处列出的联系方式在本文发布时是正确的。您所在地最近和最新联系方式，请访问

britishsteel.co.uk/locations。

If you want to find out more about our product range and how we can help you, please get in touch.

The contact details listed here are correct at the time of publication. For the latest details of your nearest location, please visit britishsteel.co.uk/locations.

按产品划分 By product

产品领域电子邮件联系方式 Product areas email contacts

异型钢 **Special Profiles:** specialprofiles@britishsteel.co.uk
线材 **Wire Rod:** wirerod@britishsteel.co.uk
线材加工中心 **Wire and processing:** info@fnsteel.eu
型钢 **Sections:** construction@britishsteel.co.uk
钢轨 **Rail:** rail@britishsteel.co.uk
半成品 **Semi-finished products:** semisales@britishsteel.co.uk

英国和爱尔兰地址 By UK and Ireland location

斯肯索普 Scunthorpe

Brigg Road, Scunthorpe, North Lincolnshire, DN16 1BP
T +44 (0) 1724 404040

提赛德服务中心 Teesside Service Centre

Lackenby Works, Redcar, Teesside, TS6 7RP
T +44 (0) 1642 405040
E construction@britishsteel.co.uk

斯金宁格罗夫 Skinningrove

PO Box 1, Skinningrove, Saltburn-by-the-Sea, TS13 4ET
T +44 (0) 1287 640212
E specialprofiles@britishsteel.co.uk

利斯本服务中心 Lisburn Service Centre

Steel House, Moira Road, Lisburn, BT28 2SN
T +44 (0) 2892 448208
E lisburn.sales@britishsteel.co.uk

都柏林 Dublin

Steel House, Bluebell Industrial Estate, Dublin 12
T +353 (0) 1405 0300
E dublin.sales@britishsteel.ie

纽波特 Newport

Excalibur House, No 1 Langstone Business Park, Newport, NP18 2HJ
T +44 (0) 1633 462653 / +44(0)1633 462636
E construction@britishsteel.co.uk

沃金顿 Workington

TSP Engineering, Derwent Howe Industrial Estate, Curwen Road, Workington CA14 3YX
T +44 (0) 1900 68000
E tsp@tsp-engineering.co.uk



其他国家地址 By country

中国 China

Nandian Town, Pingshan County, Hebei Province,
P.R. China

T +86-311-82878888 / +86-17733894427

E alen@jingyesteel.com.cn

孟加拉国 Bangladesh

T 0088-01730916601 / 0086-18236978903

E bangladesh@jingyesteel.com.cn

柬埔寨 Cambodia

T 0086-18633456868 / 00855-86680666

E kevin.liu@jingyesteel.com.cn

迪拜 Dubai

T 00971 552073261 / 0086-15233605759

E dubai@jingyesteel.com.cn

埃及 Egypt

T 0086-311-82870505 / 0086-13931890947

E alina@jingyesteel.com.cn

德国 Germany

Hansaallee 228 / Ecke Prinzenallee, 40547 Düsseldorf

T +49 (0)211 740 714-00

E germany.enquiries@britishsteel.co.uk

印度 India

T 0086-311-82870505 / 0086-18631181082

E india@jingyesteel.com.cn

印尼 Indonesia

CBD, Pluit Jakarta

T 0062-0821-10776785 / 0086-13832084742 /
0086-18631162601

E indonesia@jingyesteel.com.cn

意大利 Italy

Via Italia 44, 20900 Monza (MB)

T +39 039 387967

E italy.enquiries@britishsteel.co.uk

韩国 Korea

Seoul Yeong-eung Po-gu National Assembly Boulevard
800 Yeouido Paragon 1204

T 0082-2-7868866 / 0086-18627739412

E korea@jingyesteel.com.cn

老挝 Laos

T 0085-602056209818 / 0086-15131189377

E laos@jingyesteel.com.cn

马来西亚 Malaysia

T 0086-311-82870505 / 0086-15230148083

E ben@jingyesteel.com.cn

其他国家地址 By country

缅甸 Myanmar

No.1204, Tower A, Junction Mawtin, Lanmataw Tsp, Yangon
T 0095-9-5231998 / 0086-15097387966
E myanmar@jingyesteel.com.cn

新西兰 New Zealand

T 0086-311-82870505 / 0086-18236978903
E weidongdong@jingyesteel.com.cn

尼日利亚 Nigeria

T 00251-985201374 / 0086-13931890947
E alina@jingyesteel.com.cn

巴基斯坦 Pakistan

T 0092-3128847666 / 0086-18730217392
E pakistan@jingyesteel.com.cn

菲律宾 Philippines

T 0063-09165938860 / 0086-15032071231
E philippines@jingyesteel.com.cn

波兰 Poland

Ul. Chorzowska 150, budynek B, 40-101 Katowice
T +48 32 7841232
E poland.enquiries@britishsteel.co.uk

俄罗斯 Russia

T 0086-311-82870505 / 0086-15227847619
E russia@jingyesteel.com.cn

新加坡 Singapore

T 0086-311-82870505 / 0086-18627739412
E frank@jingyesteel.com.cn

南美 South America

T 0086-311-82870906 / 0086-13931890947
E southamerica@jingyesteel.com.cn

西班牙 Spain

Paseo de la Castellana 259C, Torre de Cristal, Planta 18,
Oficina 1811. 28046, Madrid
T +34 91 119 0581
E spain.enquiries@britishsteel.co.uk

斯里兰卡 Sri Lanka

T 0086-311-82870505 / 0086-18236978903
E weidongdong@jingyesteel.com.cn

瑞典 Sweden

Box 5044, Spinnerivägen 1, 448 51, Tollerød
E sweden.enquiries@britishsteel.co.uk

其他国家地址 By country

台湾省, 中国 **Taiwan, China**

Room 829, 5th Floor, No. 285, Section 4, Zhongxiao East Road, Taipei City, 10692

T +886 (0) 266398296

E taiwan.enquiries@britishsteel.co.uk

坦桑尼亚 **Tanzania**

T 00251-985201374 / 0086-13931890947

E tanzania@jingyesteel.com.cn

泰国 **Thailand**

90/157, Moo 15, Bangna trad rd, Bangkreaw, Bangplee, Samut Prakarn 10540

T 0066-0957276300 / 0086-15910961153

E thailand@jingyesteel.com.cn

土耳其 **Turkey**

DLT Celik Ithalat Ihracat ve Pazarlama A.S., Arnavutkoy Mah. Girgin Sok. No:1, 34345 Besiktas, Istanbul

T 0086-311-82870505 / 0086-15227847619

E turkey@jingyesteel.com.cn

美国 **USA**

1700 East Golf road suite 575, Schaumburg, IL 60173

T +1 708 8190698

E usa.enquiries@britishsteel.co.uk

越南 **Vietnam**

Park 1, Vinhomes tân cảng, 208 nguyen huu canh p 22, bình thành, hcm, Vietnam

T 0084-0-936988060 / 0086-15911137013

E vietnam@jingyesteel.com.cn

注 NOTES

注 NOTES



敬业集团
JINGYE GROUP



**BRITISH
STEEL**

HBJYJT.COM

地址 | 敬业集团总部 (Jingye Group), 河北省平山县南甸镇/邮编: 050400
电话 | 0086-311-82878888/96666666

A | Nandian Town, Pingshan County, Hebei Province, P R China 050400
T | 0086-311-82878888/96666666
E | jingye@hbjyit.com

BRITISHSTEEL.CO.UK

地址 | 英国 DN16 1BP, 北林肯郡, 斯肯索普区, 布里格路, 邮政信箱1号
电话 | +44 (0)1724 404040

A | PO Box 1, Brigg Road, Scunthorpe, North Lincolnshire, DN16 1BP, UK
T | +44 (0)1724 404040

公司已尽力确保本出版物的内容准确无误。英国钢铁有限公司及其子公司和相关企业（具有2006年《公司法》所规定的企业）对被发现具有误导性的任何错误或信息不承担任何责任或义务。

英国钢铁公司版权所有 2020

英国钢铁有限公司在英国的注册号为12303256，注册地址为位于Brigg Road, Scunthorpe, DN16 1XA的行政大楼。

Care has been taken to ensure that the contents of this publication are accurate, but British Steel Limited and its subsidiaries and associated undertakings (having the meaning set out in the Companies Act 2006) do not accept responsibility or liability for errors or information that is found to be misleading.

Copyright British Steel 2020

British Steel Limited is registered in England under number 12303256 with registered office at Administration Building, Brigg Road, Scunthorpe, DN16 1XA.

BUILDING STRONGER FUTURES

RPR:CHN:ENG:062020